

Spacecraft.

/ Architecture

/ Interior Design

Capability Statement

Contents

3	About Us
4	Sectors
5	Services
7	Team
9	Our DNA
10	Our Clients
12	Featured Projects
16	Quality & Insurance

Spacecraft.

8 Panorama Drive
Panorama SA 5041
+61 417 943 407

hello@spacecraftdesign.com.au
spacecraftdesign.com.au

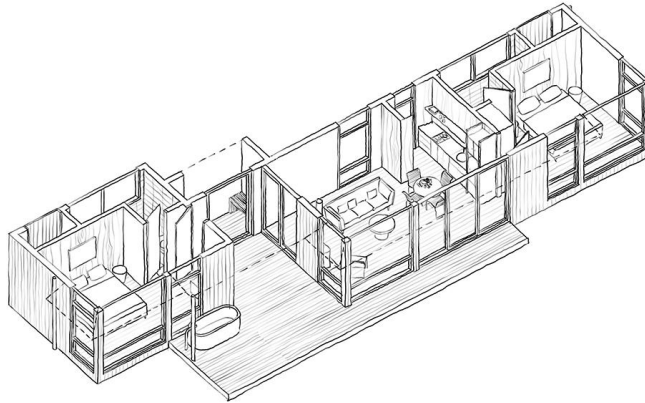
ABN: 30 612 798 580
ARBV: 600258

About Us

Spacecraft partners with people who create beautiful, functional spaces for others to live, work and play in. Our design philosophy is concept driven and executable. *Imagination that works.*

Approaching every project with generosity and consideration, Spacecraft enjoys long term working relationships with some of Australia's most innovative brands, developers and builders.

By working in collaboration with our clients and industry experts we can facilitate an outcome that is well resolved, financially viable, environmentally sensitive and meets our clients' needs.



We are a small practice with big ideas and a collection of work that demonstrates a proven ability to deliver technical and carefully crafted spaces for like-minded clients.

This document is about us; our working methods, skill set and experience. Hopefully it gives you a better understanding of who we are and what we can do for you. If you're looking for a design partner, we'd love to get to know you too.

Spacecraft was founded in 2015 and has provided innovative design solutions for accommodation, hospitality and commercial projects both on the builder and client side.

We listen to our clients and each other, value team collaboration, good design thinking and



continue to deliver projects with solid return on investment.

We are a practice which provides a full design package from concept and master planning, architectural, interior and object design through to third party approvals and procurement. This forest and the trees approach provides clients with project support at every stage, and ensures the original project vision thrives.

The Spacecraft team is diverse and dexterous. We see things from different viewpoints and with complimentary strengths - and that's when the magic happens. Members of the firm work closely with our clients, builders and consultants to ensure a successful outcome and enjoyable experience.

Sectors

01. ACCOMMODATION



- Hotels
- Co-living
- Student accommodation
- Nature based tourism

02. HOSPITALITY/ RETAIL



- Restaurants
- Cafes
- Bars
- Retail shops

03. WORKPLACE



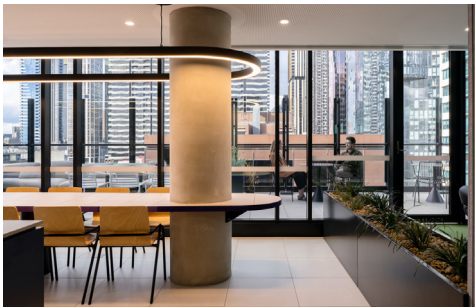
- Offices
- Commercial
- Co-working

04. EDUCATION



- Childcare & early education
- Schools
- Tertiary training facilities

05. RESIDENTIAL



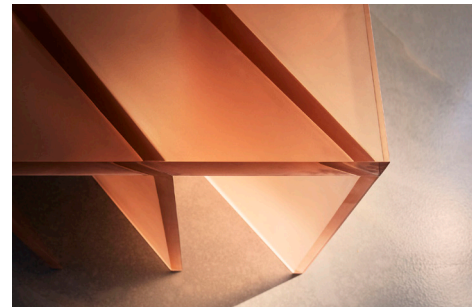
- Multi dwelling residential
- Single dwelling residential

06. INDUSTRIAL



- Primary producer processing
- Warehouse
- Workshop

07. OBJECT



- Furniture
- Lighting
- Artwork/ Installations

08. LANDSCAPE



- Playscapes
- Edible gardens

Services

Spacecraft offers a wide range of Architectural, Interior and Brand Development design services to support clients throughout a projects development. Our typical project scope includes:

STAGE 1 CONCEPT DESIGN

Preparation of an initial design concept, responding to the site constraints and opportunities, incorporating all requirements in accordance with the project brief.

- Understand the client brief, and analyse how to successfully achieve project objectives within allocated budgets.
- Understand the site, town planning controls, survey data and other site information.
- Document existing conditions.
- Development of a concept design, suitable for discussions with project stakeholders including reference images, basic plans, materials and sketch drawings.

STAGE 4 BUILDING APPROVAL

Ensure the project complies with relevant building codes and regulations. We then seek approval for the construction of your project from the relevant authorities through a building certifier.

- Develop green building principles incorporating eco-friendly and energy-efficient design elements.
- Incorporate energy efficient design focusing on reducing consumption and environmental impact.
- Ensure the project is Accessible.
- Material selection and Structural considerations
- Submission of documentation to a certifier.
- Respond to post lodgment RFIs and amendments to applications.

STAGE 2 SCHEMATIC DESIGN/ APPROVALS

Refining the concept design in accordance with legislative criteria and preparing documentation suitable for submission for council and other third parties.

- Review and incorporate the work of specialist consultants in the concept design.
- Detailed documentation package including plans, elevations and schedules.
- Preparation of a 3d model.
- Coordinate the application process and work with planners and consultants to prepare an application for submission to council.
- Respond to post lodgement RFIs and amendments to applications.

STAGE 5 CONSTRUCTION DOCUMENTATION

A detailed set of drawings and specification are prepared so that tenders can be sought, a contract signed and the project built.

- Produce a For Construction documentation set.
- Tender process managed.
- Respond to builder RFIs and amend documentation as required.
- Value engineer project as required in partnership with builder, suppliers and procurement partners.

STAGE 3 DESIGN DEVELOPMENT

Develops the approved scheme, incorporating conditions of consent into a fully articulated design suitable for assessing preliminary budgets.

- Co-ordinate and integrate the design work of sub-consultants.
- Value engineer project as required in partnership with builder, suppliers and procurement partners.
- Incorporate operations, brand and procurement feedback into documentation.
- Preparation of documentation including drawings, FF&E and Finishes schedules and specification.

STAGE 6 CONSTRUCTION SUPPORT

Architectural services to assist the construction process and ensuring timely provision of requested documentation.

- Attend the site to observe the general conformance of the construction works with the construction documentation and specifications.
- Respond to builder and trade RFIs.
- Review shop drawings to ensure conformance with the construction documentation and design intent
- Review and provide comment on any reasonable alternative design solution submitted by the contractor
- Facilitate variations and obtain client approval
- Coordinate consultants
- Prepare defects list prior to practical completion
- Design management of Day 2 works

Services

In addition to a full design service, we can also add expertise and value to any project by offering the following.

CONCEPT/ BRAND DEVELOPMENT

- Design development with deep understanding of project ideology, value proposition and identity to promote to market
- Graphic design and signage
- Brand guideline packages
- Feasibility studies
- Site assesment and cost analysis
- Operator selection packages
- Collaboration with brand technical services consultants to ensure brand requirements are met
- Food & beverage concept design

ARCHITECTURE

- Site analysis and massing diagrams
- Budget and scope development
- Budget planning and cost analysis
- Design and construction documentation
- Interior and exterior finishes schedules
- FF&E schedules
- Planning submission and management
- Building permit acquisition
- Change of use applications
- Project programming and timeline development
- Consultant co-ordination and advisory
- Construction support services (D&C design support)
- Peer review of Design and Construction documentation
- Clash detection and services coordination
- As built drawings
- Sustainable and energy efficient design
- Environmental and ecological management

- Construction certification assistance
- Design management
- Master planning and phased development strategies
- Post occupancy evaluation and performance assessment
- Accessibility and universal design

INTERIOR DESIGN

- Spatial planning
- Full documentation for permits, tender & construction
- Specification for materiality
- Furniture, fixtures and equipment selection
- Interior joinery details
- Lighting design
- 3D visualisations and VR tours
- Inventory scheduling
- Local and international procurement
- Oversee shop drawings for manufacture
- Manage prototyping and mock up rooms
- Custom furniture design and manufacture
- Select décor, art & styling

LANDSCAPE DESIGN

- Permaculture design
- Edible landscapes
- Playscapes
- Plant selection
- Lighting & Automation
- Garden furniture
- Indoor landscapes



Team



CAMERON CRISPIN
DIRECTOR

Dip. Arts, Furniture Design

Cameron is a listener, strategist, creator and innovator. He has a hands on approach to design and builds strong concepts that inform the built environment and bring life to people and places. As the design director, Cameron develops the design concept and guides the architectural and interior teams throughout the project.

Prior to establishing Spacecraft, Cameron worked for a number of design practices and was responsible for a large range of projects including accommodation buildings, hospitality venues, retail shops, landscapes and custom furniture.

Expertise

Concept and brand creation
Interior architecture
Landscape design
Project management

Qualifications

Advanced Diploma in Arts (Furniture Design)
TAFE SA . 2002 - 2004
Permaculture Design Certificate. 2018
PERMACULTURE RESEARCH INSTITUTE



JON YONG
ARCHITECT

B.Arch, ARBV 16908

A project architect working in close relation with key stakeholders to ensure a smooth delivery from the initial concept design stage to construction and client handover. Jon produces high quality documentation with a good understanding of current construction methodology and a sound knowledge of relevant building codes and local authority requirements.

His experience ranges from hospitality, retail and cinema to education, single and multi-res projects including time with PHD Retail, Design And Beyond and The Buchan Group.

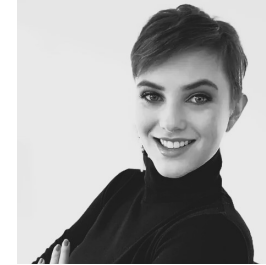
Expertise

Architecture
Construction documentation
Project management, third party approvals and documentation administration

Qualifications

Bachelor of Architecture. 2001 - 2004
UNIVERSITY OF MELBOURNE
Higher Diploma in Building Studies
KOLEJ UNIVERSITI TAYLORS

Architects Registration Board of Victoria: 16908



LIZ GIORGIO
ARCHITECT

M.Arch, ARBV 19369

Liz is a talented architect known for her passion and commitment to creating beautiful and effective spaces. With a keen eye for detail, knowledge of materiality and strong supplier relationships, she brings the right pieces together to develop highly functional buildings that stand the test of time.

Liz has worked as a project architect and team leader at various sized practices including Truesource, Elenberg Fraser and Carr Design on multi-res, commercial and retail projects.

Expertise

Architecture
Interior design
Construction documentation
Finishes, lighting and FF&E schedules

Qualifications

Bachelor of Design (Architecture)
QUEENSLAND UNIVERSITY OF TECHNOLOGY - 2010
Master of Architecture
QUEENSLAND UNIVERSITY OF TECHNOLOGY - 2011

Architects Registration Board of Victoria: 19369



SANTIKA WAHJUDI
INTERIOR DESIGNER

B.Design

Santika is a creative and highly motivated professional with broad experience on a diverse range of design and creative arts projects. She manages complex design projects with a deep understanding of spatial experience, design integrity and human centered concepts.

She has experience working on commercial, hotel, hospitality and multi-res projects across a range of small and medium sized firms including Plus Architecture, Bar Studio, The Buchan Group and Elenberg Fraser.

Expertise

Interior design
Construction documentation
FF&E & finishes specification
Project management and construction administration

Qualifications

Diploma of Management
RMIT UNIVERSITY . 2013 - 2014
Bachelor of Design (Interior Design)
SWINBURNE UNIVERSITY OF TECHNOLOGY . 2006 - 2007
Certificate IV of Interior Decoration and Design
HOLMESGLEN INSTITUTE OF TAFE . 2005 - 2006



MELISSA TARDIO
DESIGNER & DOCUMENTOR

A Dip. Interior design

Melissa has been working in the retail, hospitality and residential sectors across a variety of projects throughout Australia, Asia and the Middle East with practices such as Hirsch Bender, Bar Studio and DesignInc.

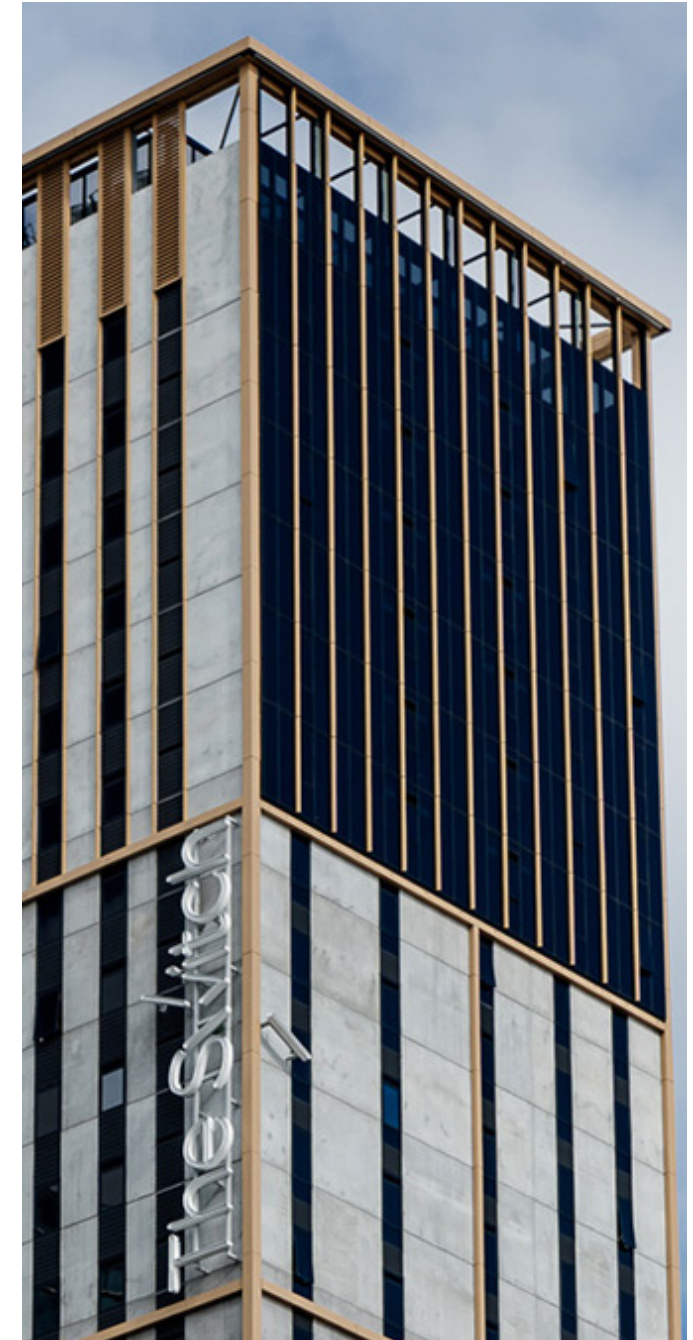
She has a discerning eye for design, invaluable communication and relationship building skills with suppliers and clients, and excels at managing FF&E and finishes schedules.

Expertise

Interior design
FF&E & finishes specification
Procurement
Design documentation

Qualifications

Associate Diploma of Interior Design
RMIT UNIVERSITY



Our DNA

CREATIVE.

We like to make beautiful things that invite people into a story or enhance their well-being.

Imagination is the engine of our practice. We take the time and effort to craft ideas into dynamic, inspiring and technically sound designs.

People centered - Our work prioritizes the needs, preferences, and experiences of the end-users throughout the design process. A human scale focus on spatial planning, ergonomics, psychology and interior flow ensure spaces are intuitive and enjoyable for the people and communities who will use them.

Ambidextrous - Our diverse team and interdisciplinary approach draw ideas and experience from building, branding, natural systems, industrial design, sustainability and culture.

Innovative - We love to push boundaries, adapt to current trends, and embrace appropriate technologies in our practice and projects. You'll see us using AI, VR, 3D modeling, BIM software and experimenting with new materials and construction methods.

Attention to detail - Architectural and joinery detailing, unique FF&E, and carefully curated finishes layer up to create a space that looks great, works well and feels right.

PRACTICAL.

Through business and site analysis our team develops clear and comprehensive documentation and project management strategies to deliver projects accurately and efficiently.

We help you get things done - some of us even like to get our hands dirty when its crunch time on site.

Functional - We think about how things work from day 1. Our interest and exposure to business operations delivers spaces that are intuitive, efficient to use and technically sophisticated.

Value - We understand that projects have to stack up. We adjust floor-plans, construction methodology and materials to find cost-effective solutions without compromising quality. We'll let you know where to be thrifty and where to spend big for the greatest impact.

Problem solving - We are flexible and adapt to changing project conditions without making a scene. We work well with the construction team to find alternate solutions while upholding the projects design intent and budget. If you have a project that's a D&C, renovation, or carries some planning, permit or buildability risk, you're going to love this.

Sustainable - Every project is audited to make the best use of energy-efficient systems, environmentally friendly materials, and ensure a focus on long-term durability and maintainability.

HUMBLE.

Our role is not to impose our ideas, ego or experience upon a project but to help bring our clients vision to life.

To us, being humble means approaching each project as unique. Good design responds to context, environment and community - we want our work to serve people and their surroundings.

Grounded - We do what's best for the client. We aren't precious about our designs or push our own agenda. Instead, we search for the best ideas, wherever they come from. We set aside preconceptions and walk up to each project with open minds and open hands, ready to collaborate.

Respect of resources - We understand financial constraints and find creative solutions that align with budgets and timelines. We're generous with our time and expertise and always bring the best wine to a party.

Listening & Learning - Clients ideas, opinions and feedback are welcomed. We listen to builders, consultants, and contractors and apply their knowledge. We are always learning, take responsibility for things that don't work out and support our clients long after the project is complete.

Undivided attention - We're a small, nimble practice and we're intentional about managing our capacity so that we can concentrate. We keep you informed and don't leave you hanging.

Our Clients

When working with clients, we can engage on the Builder or client-side, but either way - we're always looking for a win-win.

Passionate about meaningful ideas and pragmatic about the realities of building, we explore opportunities and find solutions to evolving constraints while maintaining design intent.

We bring technical knowledge, problem solving and architectural documentation support to builders in Design & Construct projects, and can facilitate the engagement of other building services consultants and third party approvals.

When working client-side, we can partner up for the life of the project. In addition to design, documentation and approval processes, we uphold our clients vision during the tendering, value management and construction stages.

Endeavour Group (ALH)

Schiavello

EVT (Rydges, Event Cinemas)

The Switch Co-living

Accord Property

Lend Lease

Charter Hall

JLL

Asahi Beverages (Great Northern)

Cre8tive Property

Rebel Property Group

Wander

We continue to have great relationships with all stakeholders long after a project has been completed, and most of our work is with people we've partnered with before. This is testament to the open, honest and authentic way we approach our projects and the people behind them.

In addition to our many private clients we have also worked with:

ACCOR (Mercure, Novotel, Sebel)

Crema Constructions

Heritage College Knox

Next Story Group

Minor International (Oaks, Avani)

Scentre Group (Westfield)

eCove Property

Reward Group

Wyndham International (Tryp)

Hirsch & Faigen

TWT Property Group

Synergy Construct

Accord Property has worked with Spacecraft over the last 24 months on our student accommodation platform across Sydney, Melbourne and Adelaide offering over 1,270 beds.

We could not speak more highly to the process and execution from the Spacecraft team. From project inception and briefing to the final installation the team managed the process seamlessly and continued to impress us with creative and quality solutions whilst ensuring aligning to our budgetary allowances. Their engagement with all our various consultants and stakeholders was extremely professional and managed to interpret strong design ideas simply and easy to understand and still maintain this when work shopping value management options.

I couldn't recommend the team at Spacecraft more highly. Please don't hesitate to contact me if you would like to discuss further.

- Edan Norris, Development Director, Accord Property
+61 410 780 022 | enorris@accord.property

We selected Spacecraft for the delivery of our portfolio interior design services for over 1,000 apartments in student accommodation, co-living and build to rent multi-family across Australia.

Spacecraft took the time to genuinely understand our brand proposition and how that related to the architectural outcomes for the building. They provided exceptional creative design solutions that integrated our brand seamlessly throughout our buildings.

Spacecraft were customer-centric in their approach, professional, timely and most importantly were able to manage multiple stakeholders through the design process.

- David Cameron, Founding Partner, The Switch
+61 413 374 626 | david@corpartners.com.au

It is my great pleasure to recommend Spacecraft for architectural and design services. Spacecraft worked with us on the Melbourne Rydges refurbishment and has rewarded us with an incredible dedication to their work. Their team has an excellent attention to detail and a powerful creative vision that has been a great asset to us. They have also consistently worked long hours to provide the timely support we needed.

Spacecraft was involved as an architect consultant for the peer review of construction drawings and have produced high quality design documentation and creative solutions to RFIs. They have collaborated with and briefed multiple stakeholders including our client, the project architect and third party consultants. They have demonstrated skill in value engineering construction details while maintaining design intent.

- Prada Budehal, Senior Project Manager, Schiavello
+61 448 988 701 | PBudehal@schiaavello.com

Featured projects 2023

Rydges Melbourne 198 Exhibition St, VIC

Refurbishment of an existing 19,400 m2 hotel across 27 floors including 293 standard rooms, 77 suites, pool and fitness areas, conference and events spaces, restaurants and bars.

Client: EVT
Builder: Schiavello
Scope: Peer review of architectural documentation, construction detailing and design management.



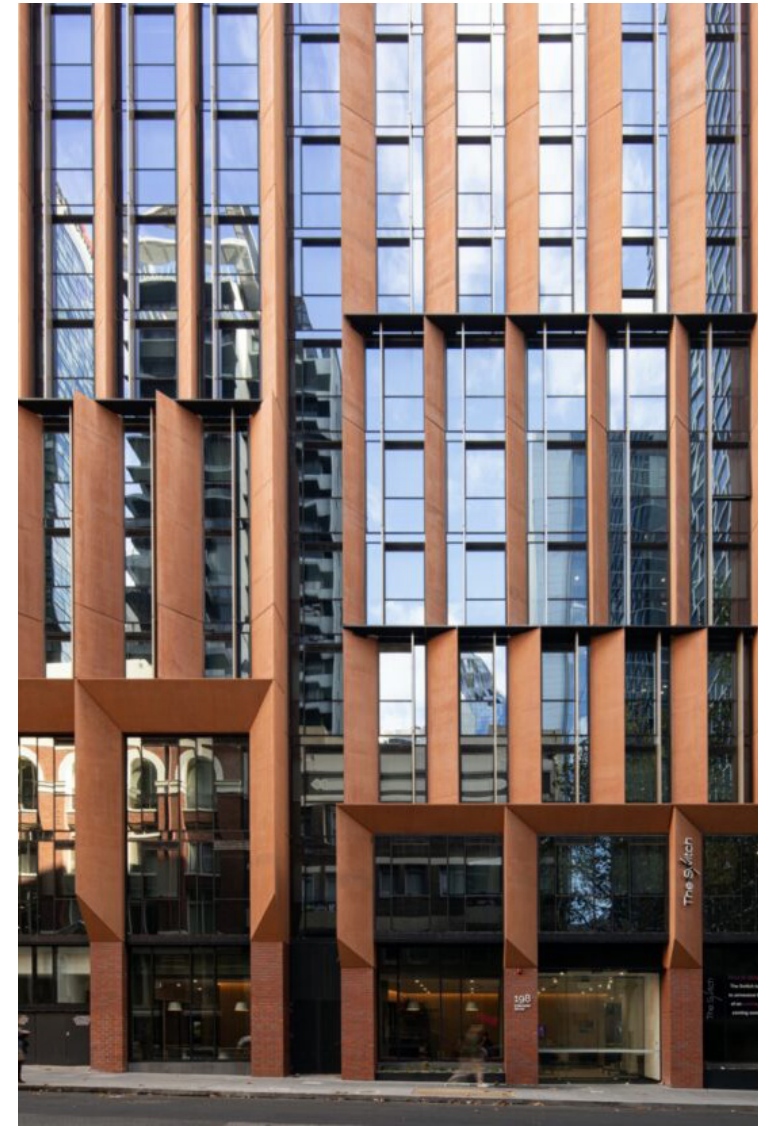
The Switch 198 A'Beckett St, VIC

48 story, 888 room new build student accommodation including gym, outdoor terrace, communal kitchen, study areas and cafe.

Client: The Switch

Builder: Crema Constructions

Scope: Interior design and architectural design management, FF&E procurement, wayfinding and artwork development.



Wander
Kangaroo Island, SA

**4 off-grid eco cabins overlooking
Snelling Beach**

Client: Wander
Builder: Wander
Scope: Design of the cabins and
supporting infrastructure including
planning application, off-grid systems
and interior design.



Key Recent Projects

HOSPITALITY

NORTHERN GROUNDS, ADELAIDE

Client: ALH

Budget: TBC

Scope: 900m2 pub renovation. Restaurant, bars, mezzanine and beer garden

Role: Architect in partnership with interior designer

[Mitchell&Eades](#)

Year: 2023

DUNES CAFE, ADELAIDE

Client: Accord Property

Budget: \$150K

Scope: 160m2, 40 seat cafe fitout

Role: Architect and interior design

Year: 2023

LA CUCINA, MELBOURNE

Client: Total Fitouts

Budget: \$150k

Scope: Italian restaurant and wine bar. 185m2 including commercial kitchen, bar, dining rooms

Role: Architect

Year: 2023

BOOMERANG, SYDNEY OLYMPIC PARK

Client: Ecove Group

Budget: \$768K

Scope: Podium retail activation. 380m2 including cafe, commercial office, public library

Role: Interior design

Year: 2020

MULTI-RESIDENTIAL

OPUSK LUXURY RESIDENCE, HO CHI MINH

Client: SonKim Land

Budget: \$7 mil

Scope: Branded residence. 1300m2 of public amenity including, restaurant, wine bar, gym, yoga studio, day spa, co-working, library

Role: Interior design in partnership with [Evocateurs](#)

Year: 2021-2022

ACCOMMODATION

RYDGES, MELBOURNE

Client: EVT

Budget: \$90 mil

Scope: 19,400m2 hotel refurbishment. 293 standard rooms, 77 suites, pool and fitness areas, conference and events spaces, restaurants and bars.

Role: Peer review of architectural documentation, construction detailing, design management in partnership with [Schiavello](#)

Year: 2022-2023

SWITCH LIVING, MELBOURNE

Client: COR Partners

Budget: \$70 mil

Scope: Co-living new build. 665 rooms, communal dining, co-working, games room, theatre

Role: Interior design, procurement, architectural design management in partnership with [Hayball](#) and [CREMA](#)

Year: 2022-2023

NH HOTEL, WOOLLONGONG

Client: Next Constructions, Held Property

Budget: \$100 mil

Scope: New build hotel. 240 guest rooms, fitness centre, restaurant, conferencing

Role: GFA and floorplate configuration, architecture and design in partnership with [Architecture AND.](#)

Year: 2022

SWITCH LIVING, ADELAIDE

Client: COR Partners

Budget: \$40 mil

Scope: New build co-living. 367rooms, communal dining, co-working, games room

Role: Interior design, procurement

Year: 2021-2023

SWITCH LIVING, PERTH

Client: COR Partners

Budget: \$70 mil

Scope: New build co-living. 483 rooms, cafe, communal dining, co-working, games room, theatre

Role: Interior design

Year: 2021

375 PITT ST HOTEL, SYDNEY

Client: Rebel Property Group, Everest Property

Budget: \$70 mil

Scope: 35-storey hotel with 250 rooms, on a mixed use podium

Role: Architecture consultant. GFA and layout design of lobby, f&b retail and back of house in partnership with [Cre8tive](#)

[Property](#)

Year: 2020

WORKPLACE

JOHNSTON WITHERS OFFICE, ADELAIDE

Client: Johnston Withers Lawyers

Budget: \$800K

Scope: Office renovation. 1000m2 including reception, meeting rooms, kitchen, bathrooms and courtyard

Role: Architect

Year: 2023

URBAN NEST OFFICE, SYDNEY

Client: Urban Nest

Budget: \$210K

Scope: Office renovation. 120m2

Role: Interior design

Year: 2019

EDUCATION

HERITAGE COLLEGE KNOX, MELBOURNE

Client: Heritage College Knox

Budget: \$700k

Scope: Renovated food and textiles wing. 250m2 including kitchen, bathrooms, technical training rooms

Role: Architecture, landscape design

Year: 2022 -2023

HETC CAMPUS, GOLD COAST

Client: Azzura

Budget: \$1.8 mil

Scope: Hospitality training fitout. 1150m2 of retail, kitchens, classrooms and cafe

Role: Interior design

Year: 2018

Quality & Insurance

Spacecraft has developed quality assurance management procedures that allow us to consistently deliver our projects on time and to a high standard appreciated by all project stakeholders.

- \$20m Public Liability
- \$5m Professional Indemnity

Certificates of currency available upon request.

Our practice manual outlines a quality assurance system for the management of both company and project activities within the practice.

Items within the manual include the following:

- Implementation and control of Project Quality Plans
- Brief, programme and deliverable guidance
- Design control, review and verification procedures
- Control of drafting, specification and modelling standards, including cross team checking
- Guidance for the approval of samples etc.
- Procedures for the approval of consultant and sub consultant work
- Digital and paper copy document and data control, including review procedures and the maintaining of registers and transmittal forms etc.
- Procedures regarding site attendance, including all OH&S matters
- Organisational and technical interface guidance
- Meeting documentation procedures including minutes, agendas pro forma and the like
- Quality control of correspondence procedures, including receipt, issue and circulation of Practice, Client, Consultant and Contractor information both internally and externally
- Regular periodic project status update procedures including monthly PCG reporting
- Control of noncompliant material and/or information
- Maintaining of records and archives
- Auditing procedures

In addition to project specific protocols, Practice wide procedures have been implemented to ensure safe, efficient, and environmentally responsible management of the business and working environment. Practice procedures include the following times:

- Resource management
- Financial management
- Energy procedures
- Waste and recycling procedures
- OH&S procedures
- Emergency procedures

Further to our internal guidelines, independent review of design and documentation is conducted and minuted at the completion project milestones, including Design Development and Contract (Tender) documentation stages to ensure that the Client Brief has been correctly interpreted within the documents and that they meet building codes, zoning regulations, and other legal requirements.

At project completion, we conduct a Post-Occupancy Evaluation Audit involving the user groups and the project management team, and issue this document to the client in order to complete the brief / design / documentation / and implementation circle.



Spacecraft.

8 Panorama Drive
Panorama SA 5041
+61 417 943 407

hello@spacecraftdesign.com.au
spacecraftdesign.com.au

ABN: 30 612 798 580
ARBV: 600258